

# LANDS AND RESOURCES DEPARTMENT NEWSLETTER



**Lands and  
Resources**  
*Ucwalmícw Tmicw*

**OCTOBER 2020**

NEWS AND UPDATES WILL ALSO BE POSTED ON  
THE LÍLWAT NATION WEBSITE.

[WWW.LILWAT.CA](http://WWW.LILWAT.CA)

The Land is central to Lílwat culture and identity as expressed  
in the Ucwalmicwts phrase

**“Pal7míntwal i ucwalmícwa múta7 ti tmicw”**  
*The land and people are together as one.*

This core belief is the cornerstone of the  
Land's and Resources Department's work to maximize the  
Lílwat Nation's control over its land and resources.

## A WORD FROM THE DIRECTOR

Áma Sq'it!

There is so much to share since our last newsletter. New staff, lots of projects on the go, and updates on our fish count. We hope you enjoy the newsletter and, as always, if you ever have any questions about our work or would like to learn more about what we do we encourage you to contact us. We are always happy and proud share information about our work in Lil'wat Territory.

Palá7míntwal i ucwalmícwa múta7 ti tmícw

Harriet VanWart - Lhíkminan, Director, Lands and Resources Department

### Department Activities

Our day to day operations in fisheries, environmental assessments, archaeological studies, mapping and land use management keep us very busy. In addition to these ongoing operations, here is a brief summary of some current projects:

#### Land Allotment Policy

This is a new policy to create a transparent and fair process for Lil'wat Citizens who do not have access to family land to apply for a land allotment for residential or agricultural use. Julia and her Steering Committee of four Lil'wat community members worked very hard over the past year engaging with the community and reviewing many drafts of this policy. We presented the draft policy to Council last month. Council requested further information about where new land allotments will be made available. We will look at this question in our work this year to renew the Community Land Use Plan.

#### Community Land Use Plan Renewal

Our five-year Community Land Use Plan is now in its last year. It's exciting to see all that has been accomplished. One example - Maxine Bruce recently completed habitat restoration work on the Birkenhead River to protect fish and fish habitat. This was a specific objective in the Community Land Use Plan. Well done Maxine and all those who came together to support this important work. Now its time to plan for the next five years. We will be reaching out to you for your input.

#### Visitor Use Management Strategies

Our department is now engaged in three different Visitor Use Management Strategy processes with the provincial government. Each are in different phases.

- Joffre Lakes Park: A Draft Visitor Use Management Strategy is complete, and we expect to be implementing the plan next year. We are currently taking advantage of the Park's closure and collecting important environmental and archaeological baseline data.

- Meager Hot Springs and Keyhole Hot Springs:

We have been working on this Visitor Use Management Strategy over the past year. We are now at the phase of determining if or how these places can be open to the public and still protect all the important wildlife habitat and unique ecological values.

- Tenquille Lake Visitor Use Management Strategy

We recently held our first meeting to start this process. The Lil'wat Working Group includes Councillor Lucinda Phillips and William Ritchie from our Referral Committee, along with Sandy Ward and Sonia Leo, two community members that have stepped up to provide community input. Staff on this team are Harriet VanWart, Julia Poetschke, Carrie Lester and Johnny Jones. At our first meeting we had a great discussion about the abundance of wildlife in the area, the cultural important plants such as huckleberries and hákwa7, and some archaeological sites in the near vicinity.



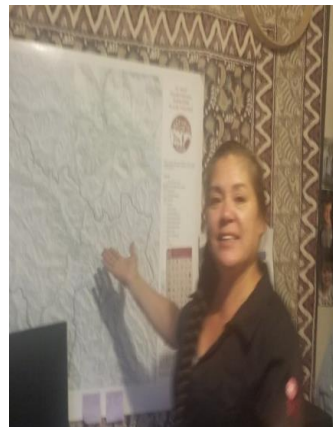
## Lil'wat Skél7awlh

Many First Nations in BC are building First Nation Guardian programs to take on a stewardship role in their respective traditional territories. We love this concept and are working on a similar program for Lil'wat Nation. We felt that for Lil'wat Nation, this was best captured in the Ucwalmicwts term “Skél7awlh”, meaning stewards of the land.

Each year, the Lands and Resources department hires seasonal field staff that conduct archaeological, environmental and fisheries work throughout Lil'wat Territory. Our field work spans from Whistler, to Meager Creek, to Upper Lillooet, to Joffre and down Lillooet Lake, and more. These field technicians are our Lil'wat Skél7awlh. Furthermore, we are working on future projects to increase our stewardship role in the Territory. Future projects for the Skél7awlh will include and new environmental monitoring program for the Upper Lillooet Hydro projects and implementing the Visitor Use Management Strategies for Joffre Lakes Park, Meager Hot Springs, Keyhole Hot Springs and the Tenquille Lake Recreation Site. We are very proud of all the hard work the Lil'wat Skél7awlh do throughout Lil'wat Territory.



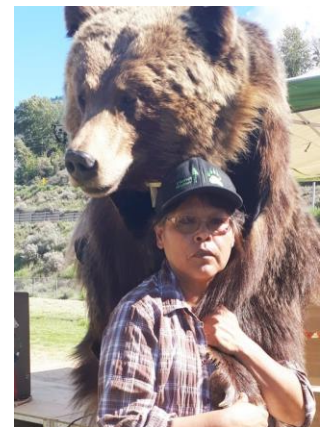
Wade Wallace  
Field Crew Supervisor



Tammie Jenkins  
Environmental  
Field Crew Supervisor



Arnold Nelson  
Fisheries Technician



Vanessa Dan  
Environmental  
and Cultural Technician



Anthony Andrews  
Fisheries Technician



Slade Wallace  
Fisheries Technician

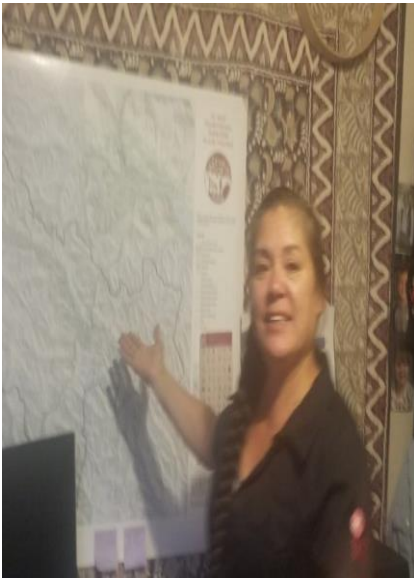
### Sockeye Fence Technicians

- Avery Dan
- Nicholas Dan
- Matthew Dan
- Harvey Dan
- Kenneth Wallace
- Francis Gabriel
- Thea Warren

## New Faces in the Lands and Resources Department

The Lands and Resources Department is so delighted to welcome Tammie Jenkins, our new Environmental Field Crew Supervisor and Maria Andrew, our new Lands Registration Clerk!

Tammie Jenkins has been working for us for years as an Archaeology, Fisheries and Environmental Technician. Her strong field and leadership skills are now being fully utilized in her new position as an Environmental Field Supervisor. Congratulations Tammie and thank you for your continued hard work and commitment to our department and Lil'wat Territory!



Hello, my name is Tammie Jenkins. I have been delighted and fulfilled by climbing aboard the Lands and Resource team, now since 2013. I have recently been hired on as the Environmental Field Crew Supervisor.

I know 2020 has not hit everyone's favourites list, but I am proud to let community know that does not mean we have forgotten what is important to our future generations.

The Lands and Resource team is very pro-active in our Fisheries, Environment and Archaeology departments. We are working together to protect and monitor areas when in need. There is always work that needs to be done, and we are making sure that its needs are met, and safety is brought to our community members.

Please try to always get out on the land and make the best of the rest of 2020.

Thank you, all my relations!

We are also very happy to welcome Maria Andrew to our Lands and Resources Department. In August, Maria started in a new part time position as our "On-Reserve Lands Registration Clerk". Maria's strong organizational skills and attention to detail are such an asset in this role. This new position has allowed Julia Poetschke to transition into her new role as "Projects and GIS Coordinator". Congratulations to both Maria and Julia in your new positions!

Hello, my name is Maria Andrew and I am the On-Reserve Lands Registration Clerk. I am looking forward to working with Community members and the Land Management Board to register individual and family parcels within this beautiful territory. I feel like this is so important for the next seven generations to help guide them in understanding how their ancestors lived on the land. Through the applications, there are many discussions about the history of the land, and I am working on documenting a searchable database for this information.



I have lived here for 17 years now and love this community. The history of the land that I live was on was known as Zumak, where the spring salmon came through, the land was part of the riverbed. My family and I have great respect for the land and ceremonies that were done here in the past and will continue to be done in the future. Kukwstumkálap for the honour and privilege to work for the Lil'wat Nation Lands and Resources Department.

## Are you interested in the On-Reserve Land Registration Process?

Here are the steps:

1. Complete the Lil'wat Nation Land Registration or Land Transfer form. Follow the instructions on the front page of the form. Only Lil'wat Nation Citizens are permitted to register, transfer, or sell reserve land.
2. Submit the Land Registration or Land Transfer form, along with any relevant documentation proving your or your family's past use, occupation and title of the land being registered, to the Lil'wat Nation Land and Resources Department. Ensure all of your contact information is on the form so the Lands Officer can contact you. The Lands Officer will review your application and advise if any further information is required.
3. The Lands Officer will construct a map of the land and add this to your file. The land boundaries may already exist in the Nation's Land Registry. If the boundaries are unavailable, incomplete or unknown, the Lands Officer will set up an appointment to take GPS points of the boundaries of the land.
4. Once complete, your file will be taken to the Land Management Board, who meet approximately every six weeks. The Board will review and consider the file. If the supplied documents are sufficient to prove title and intention, the Board will move to have the land registration posted in the community for a period of 60 days. The Board may request further evidence of title or intention; this may be additional signatures of verification, older photographs or maps of the land, etc.

### Note:

If the Board is aware of a major dispute, the file may still proceed to community posting in order to bring the dispute forward. If the file has already been posted, or if the dispute is of an outstanding nature, the Board may request that the disputing parties enter into facilitated discussions prior to the file moving forward.

5. Following successful approval, the Lands Officer will create a poster of your land registration application. This poster will be posted in the Lil'wat Nation's Community Notice boards. The postings will be displayed for 60 days to give the community a chance to review the application. Any disputes over the application must be received at the Land and Resources office in writing before the end of the 60-day period. The notice will indicate the relevant dates.

If a written notice of dispute is filed with the Land and Resources Office, the parties will be required to enter the dispute resolution process as set out in section 7 of the Lil'wat Land Law (2010).

6. If no disputes are received during the 60-day posting period, the Lands Officer will take the file back to the Land Management Board for finalization. The Lands Officer will update the Board on the status of the posting and any dialogue that may have occurred regarding the land. The Board will move to finalize the registration.
7. When a land registration is finalized, the Lands Officer will issue a letter of certification outlining the motion passed by the Land Management Board and, where necessary, any conditions that might have been imposed on the land registration. This will include a new map of the final, confirmed boundaries of the land parcel. The Lil'wat Nation Land Registry will also be updated at this time.

For more information or an application form, please contact Maria Andrew at  
maria.andrew@lilwat.ca or 604-894-6115 extension 2463

## **Ama swa takem swat**

### **Entsas Lhpatq, sama skwatsits Maxine Bruce. Lil'watulhkan**

Good day everyone,

I wanted to take some time to share with you a name giving process that Kik7ak (Councillor Helen Edmonds) and I undertook. During the initial months of COVID-19, my cousin Helena and I were chatting about the importance of living the Lil'wat way of life and the importance of having an uclwamicwts skwatsits. This discussion led to talks about the land and resources; Helena holds the On-Reserve Lands portfolio, so we had a lot to talk about.

Somewhere in our discussions we brought up Councillor Lucinda Phillips and all that she does for Lil'wat. Finally, I said, "Cousin, lets give Lucy an ucwalmicwts skwatsits!" We agreed to put efforts into finding a suitable name, in turn, Helena was tasked to talk with our elders. As a part of our discussions we felt that the Director of Land and Resources does so much for Lil'wat regarding the importance of marking our territory, especially marking the archeological sites. We thought it would be good to also give an ucwalmicwts skwatsits to Harriet who is the Director of the Land and Resources Department.

Helena and I wanted to host a name giving ceremony while following COVID-19 safety guidelines. We planned for an event to take place at the Xet'qlacw School fields, however due to the talks about a "2nd wave", we opted to host a small gathering.

On September 10th, about 20 of us we came together on the banks of Qwelimak (Birkenhead River) to ceremony; we prayed for our salmon, in our prayers we asked Chief COVID to leave Lil'wat and we acknowledged that Lil'wat has occupied this land since time-out-of-mind.

Much appreciation to Sawt (Councillor Martina Pierre) for leading us in a prayer and for reminding us how important the Land and Resources are to Lil'wat. Many thank you's to Sawa7a (Maureen Leo) for the ceremony, for sharing such strong words and perspective.

Finally, when the ceremonies for the land and resources was done, we moved forward with the name-giving. The name-giving process was a well-kept secret. We called on Lucinda Phillips to stand with us as we shared how we came up with her new ucwalmicwts skwatsits. Thank you to Pricilla Ritchie and Vera Edmonds for guiding us. We chose "Wen'cwul" (talks truth) for Lucy. It was said that Wen'cwul talks truth and doesn't sugar coat her words. Lucy gracefully accepted the name. From now on please address Councillor Lucinda Phillips as Wen'cwul.

To conclude our ceremony, we called upon Harriet who is the Director of Land and Resources. Again, thank you to our elders Pricilla Ritchie and Vera Edmonds for guiding us. We chose the name "Lhikminan" (to write on the land) for Harriet. Harriet gracefully accepted the name. From now on, please address Harriet as Lhikminan.

We felt that it was important to inform Lucy and Harriet's families of the name giving ceremony, so we thank their families for allowing us to do this very important ceremonial work.

On behalf of Kik7ak and myself, Kúkwtumúlhk'áap, Nilh ti

# FISHERIES REPORT

**MAXINE JOSEPH-BRUCE – Fisheries and Environmental Manager**

## **Ama swa takem swat. Entsas Lhpatq. Lheltsamecwkan**

August and September 2020 - Just thought I'd drop a FISH LINE

The Lil'wat Technicians, the Skel7awlh are very busy this time of year, their efforts are being spent doing the following:

### Environmental Monitoring Projects:

- Fitzsimmon's Creek gravel removal for the purpose of flood mitigation.
- Pemberton Creek Channel clearing. The channel from Pemberton Creek to One Mile lake is full of vegetation, so clearing the channel will convey the creek into the lake.
- Pemberton Creek bank erosion efforts. Placement of large rock onto the banks of Pemberton Creek in-an-effort to stabilize and reduce erosion.
- Whistler Golf Course Gravel removal
- Miller Creek Independent Power Project sediment removal
- Upper Lillooet River Vegetation Management surveys

### Fisheries:

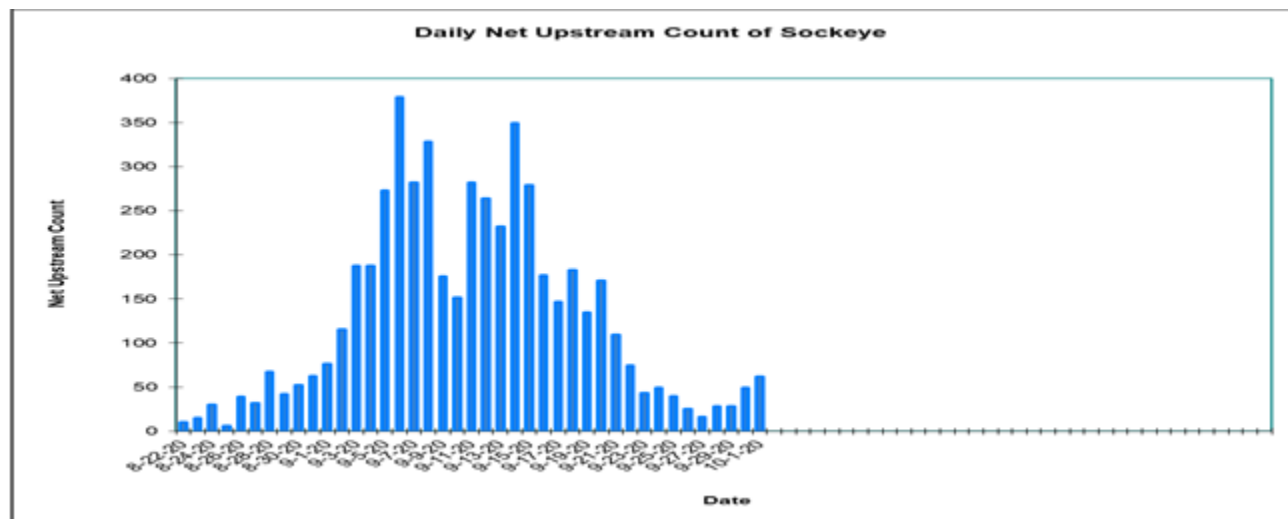
- Bank walks on Lower Lillooet River and tributaries
- Bank walks on Upper Lillooet River and tributaries, including Birkenhead River
- Start the Lillooet River Coho Counting Project and Riverbank walks

Regarding the Birkenhead River Sockeye Count, as of October 1st was at 5,263 Sockeye Salmon passed the counting fence.

Thursday, October 1st was our last day of recording Sonar files on the Birkenhead. Removal of the Sonar on Friday went well. We managed to remove everything and move all equipment without any issues. Sockeye were still migrating past the fence on October 1st in low numbers.

On Thursday's survey of the lower Birkenhead the Fisheries Techs were able to observe a few more live spawning and recover and sample some fish. We plan on completing two more surveys on the Birkenhead this week to wrap up the project, and head back to the Green River for a final survey.

This is the last Sonar update of the season.





# The Community Land Use Plan Renewal has begun!

## JULIA POETSCHKE – Projects and GIS Coordinator

Over the next year, the Lands and Resources Department will be working to update our Community Land Use Plan (CLUP). A CLUP is a guiding document used by staff to manage community lands, guiding decision making on what can be done on different parcels of land. A CLUP will typically have an overarching vision with specific goals, objectives and strategies. The current CLUP was completed in 2015 and was designed to be updated every 5 years to reflect changing circumstances, concerns and priorities.

We will be communicating regularly with the community on the work occurring for this plan. In case you missed it, you can find our first community project newsletter on the next page. This newsletter further explains the project and why we are doing this work and includes the project timeline.

Here is what we have accomplished to date:

- Hired The Firelight Group, an Indigenous-owned consulting firm, to provide technical support for this project
- Conducted background research and identified parts of the plan that need updating (ongoing)
- Published the first community project newsletter (next one to come in November)
- Established a Technical Working Group of staff to share technical expertise and held our first meeting
- Established a Lilwat Steering Committee to guide the project and held our first meeting
- Began discussions on how to safely conduct community engagement

### Our CLUP Team:

#### Technical Working Group Members

- Harriet VanWart, Director of Lands & Resources
- Maxine Bruce, Fisheries and Environmental Manager
- Julia Poetschke, Projects & GIS Coordinator
- Tom Laviolette, Director of Public Works, Infrastructure and Housing
- Kerry Mehaffey, CEO of Lilwat Business Group

#### Lilwat Steering Committee Members

- Helena Edmonds, Council Representative
- Dawn Wells, Land Management Board Representative
- Marcella Jim, Housing Board Representative
- Maxine Bruce, Corporations Board Representative
- Alison Pascal, Lilwat citizen
- Richenda Grafton, Lilwat citizen
- Tara Ritchie, Lilwat citizen

### What's next?

Over the next month, we will continue our background research, meet with and interview key staff, and prepare for community engagement, which will take place from November-March. If you would like to be involved in this project, keep an eye out for postings about engagement opportunities on the Lilwat website, Facebook page and on public notice boards.

If you have any questions, please contact Julia Poetschke, Projects & GIS Coordinator, by phone at 604-894-6115 or via email at [Julia.Poetschke@lilwat.ca](mailto:Julia.Poetschke@lilwat.ca).



## COMMUNITY LAND USE PLAN RENEWAL

# Project Newsletter

August 24, 2020 | Newsletter #1

## Welcome to the First Edition of the Community Land Use Plan Renewal Project Newsletter!

We will be publishing this newsletter regularly over the coming months to keep Lilwat members informed about a new Lands and Resources Department project that is kicking off this month: the Community Land Use Plan Renewal Project.



**LÍLWAT NATION**  
Community Land Use Plan Renewal

### WHAT IS A COMMUNITY LAND USE PLAN?

A Community Land Use Plan (CLUP) is a guiding document that provides information about community priorities for managing reserve lands and other Nation-owned land parcels. A CLUP typically has an overarching vision, along with more specific goals, objectives, and strategies. It is used by staff to manage community lands and guide decision making with respect to what can be done where on different parcels of land.

### WHAT IS THE LÍLWAT NATION COMMUNITY LAND USE PLAN RENEWAL PROJECT?

Our current CLUP was completed in 2015 and it is now out of date. For the CLUP Renewal Project, we will be working with staff, leadership, and members to ensure that the new plan addresses community concerns and reflects current priorities. Additionally, we will be updating the 2015 CLUP to include Lilwat owned fee simple parcels.

### WHY ARE WE UPDATING THE CLUP AND WHAT WILL THE UPDATE INCLUDE?

Our Lands and Resources Department is committed to ensuring that our CLUP remains relevant. To fulfill this commitment, the CLUP was designed to be updated every 5 years as circumstances change. Our



new CLUP will guide the use of Lilwat reserve and fee simple lands until 2026.

The update will include the following:

- Community engagement – We will be organizing community engagement activities to ask community members about their thoughts, ideas, priorities for, and concerns about the use of Lilwat community lands.
- Updates to land use zones and policies – We will review the zones and policies in the 2015 plan and make recommendations about potential updates and changes that reflect current needs, based on what we hear from community members and staff.
- Plan revisions – We will use the information gathered over the course of the project to update the old CLUP and

present a new, updated CLUP to Chiefs and Council for ratification.

### HOW WILL THE WORK BE DONE?

The Lands and Resources Department is responsible for the CLUP Renewal Project, and we have also hired The Firelight Group to provide technical support. The Firelight Group is an Indigenous-owned consulting firm that is based in Vancouver. Firelight staff will be working closely with a community-led Steering Committee and Lilwat Nation staff and council members to complete the CLUP Renewal Project.

[continued next page](#)

## PROJECT TIMELINE

The CLUP Renewal Project is getting underway in August 2020 and will end by July 2021. The project will be undertaken in three phases.

Phase	Description	Timeframe	What to Expect
<b>Phase 1: Setting the Stage</b>	Phase 1 is all about laying the groundwork that will guide all aspects of the project. We will form a Steering Committee consisting of community members to help guide the entire project. We will also review background documents to ensure that we know what information already exists, and meet with staff to begin the update.	August – November 2020	Call-out for community members to sit on the Steering Committee (complete) Interviews and meetings with staff CLUP Newsletters #1 and #2 Regular project updates on Lilwat's website and Facebook page
<b>Phase 2: Identifying Priorities</b>	Phase 2 will focus on community engagement, and specifically, on creating opportunities for community members to share their thoughts, ideas and concerns about the use of Lilwat community lands. We will be asking questions like, what are your priorities for community lands? What issues are you worried about?	November – March 2021	Community engagement activities (interviews, focus groups, etc.) Community survey Briefings to Chiefs and Council CLUP Newsletter #3 More updates on our website and Facebook page
<b>Phase 3: Revising the CLUP</b>	Phase 3 is all about taking the information gathered during Phases 1 and 2 and updating the CLUP. Of course, we will verify the plan with the community and seek input and approval from Chiefs and Council before finalizing the plan.	March – July 2021	2020 Community Land Use Plan draft development Presentation to Chiefs and Council Presentation to the community Newsletter #4

## HOW CAN I BE INVOLVED?

You can participate in the CLUP Renewal Project by sitting on the CLUP Steering Committee or by taking part in our upcoming community engagement activities. Community engagement will begin in November. Look for postings on the Lilwat website, our Facebook page, and on public notice boards.

## A NOTE ON COVID-19

To ensure the safety of all members, for the time being, all project communications and community engagement will be organized

through Facebook, email, telephone, and other online platforms. We hope to harness the power of technology to connect with you in the comfort of your own home until it is once again safe to gather as a community.

## CONTACT US!

If you have any questions, please contact Julia Poetschke, Projects & GIS Coordinator, by phone at 604-894-6115 or via email at [Julia.Poetschke@lilwat.ca](mailto:Julia.Poetschke@lilwat.ca).

Photo by koxd on Flickr  
Licensed under CC BY 2.0

Recently, the Lands and Resources Department held a Storytelling Contest for community members to share their stories and memories of their traditional use of the land.

This submission by Courtney Dick was selected as the winner.

Thank you, Courtney, for sharing your story.

*My favourite memory from growing up in our beautiful Lil'wat territory stems from the teachings that my late uncle Eugene 'Manba' Dick passed on to us. He built a sweat lodge up beside the creek and taught us how to heat the rocks and transfer them to the pit in the sweat lodge, to bring the water in from the creek to splash the rocks with cedar boughs soaked in the water to create the steam. How to talk to the creator and ask for protection and good health for our families. And the challenging part going to dip in the cold creek in the four directions afterwards. It was the most pivotal, meaningful, and spiritual teaching to this day, and I will never forget it. I loved my uncle for being there for us and passing on such invaluable ways for the future generations to keep alive. I know for a fact these teachings have passed on to our next generation already with my brother's girls being fluent in our language and drumming and singing. With my sister's children loving their drumming and songs as well, even though they live away from the community.*

I cherish these memories and look forward to seeing it stay strong.

All my relations,

Courtney Dick



**Contact the Lands and Resources Staff:**

Harriet Van Wart, Director – [harriet.vanwart@lilwat.ca](mailto:harriet.vanwart@lilwat.ca) or 604 894 6115 Extension 2464

Maxine Joseph-Bruce, Fisheries and Environmental Manager – [maxine.bruce@lilwat.ca](mailto:maxine.bruce@lilwat.ca)

or 604 894 6115 Extension 2465

Carrie Lester, Referrals Manager – [carrie.lester@lilwat.ca](mailto:carrie.lester@lilwat.ca) or 604 894 6115 Extension 2462

Julia Poetschke, Project and GIS Coordinator – [julia.poetschke@lilwat.ca](mailto:julia.poetschke@lilwat.ca)

or 604 894 6115 Extension 2463

Maria Andrew, On-Reserve Lands Registration Clerk – [maria.andrew@lilwat.ca](mailto:maria.andrew@lilwat.ca)

Or 604 894 6115 Extension 2463

Lex Joseph, Cultural Technician – [lex.joseph@lilwat.ca](mailto:lex.joseph@lilwat.ca) or 604 894 6115 Extension 2460

Johnny Jones, Cultural Technician – [johnny.jones@lilwat.ca](mailto:johnny.jones@lilwat.ca) or 604 894 6115 Extension 2461

Richenda Grafton, Administrative Assistant – [richenda.grafton@lilwat.ca](mailto:richenda.grafton@lilwat.ca)

or 604 894 6115 Extension 2467

We hope you enjoyed the read and please provide any feedback or questions

or if you would like to sign up for a digital copy

of this newsletter, please contact [richenda.grafton@lilwat.ca](mailto:richenda.grafton@lilwat.ca)

**“Amhalhts’a, T’ul’lec, Ats’xentsut”**

**“Be Kind, Be Calm, Be Safe”**