

# Lands and Resources



Pal7míntwał i ucwalmícwa múta7 ti tmicw

The land and people are together as one

*Visitor Use Management Team at Tenquille Lake September 2021 (next page for story)*



Welcome to our quarterly newsletter! In here you will find updates on our "Visitor Use Management Strategy" (VUMS) and the "Community Land Use Plan" (CLUP). There is thorough information on the Land Registration Process, exciting updates from Fisheries and Environment Manager Maxine Bruce and more!...

## October Newsletter

By Roxanne Joe



As a new member of the Lands and Resources team I would like to introduce myself. My name is Roxanne Joe (Xumalus), Administrative Assistant. I have lived and worked in Lilwat and Pemberton my whole life. I spend a lot of my spare time in the great outdoors with my dog Reda and partner Chris. Having worked in the community in an office setting, I am very proud to have found myself working for Lilwat Nation Lands and Resources. This career offers the perfect blend of my outdoor passion and profession. I look forward to what I can contribute to our community. Feel free to reach out to me if you have any questions or need to be connected with anyone of our lovely staff. Kúkwstumíckacw [Roxanne.joe@lilwat.ca](mailto:Roxanne.joe@lilwat.ca)

## Tenquille Lake Visitor Use Management Strategy

Tenquille Lakes is a beautiful area in Lílwat Territory, that also borders on N'Quatqua Territory, and is becoming increasingly popular for visitors. Lílwat, N'Quatqua and the Province have been working together over the past year and a half on a Visitor Use Management Strategy to protect the area from the impacts of recreational use. These strategies include:

- Lílwat and N'Quatqua Skel7awlh (Stewards) hiking the access trails, collecting environmental baseline data, and informing visitors about the First Nations territories,
- Conducting an Archaeological Overview Assessment to ensure archaeology sites are properly registered and protected,
- Prohibiting dogs and motorized use to protect the wildlife,
- Setting up designated camping sites and a reservation system to reduce impacts on the sensitive alpine vegetation, and
- Having a site operator to manage visitors and maintain the site

To celebrate our successful work together we hiked (and helicoptered!) into Tenquille Lake and held a celebration with drumming and singing.

It was a beautiful day, and the sounds of Lílwat drumming and singing echoing through the mountains was a powerful and moving experience.

## Meager and Keyhole Hot Springs Visitor Use Management Strategy

Ongoing work with the Province has occurred to implement our Visitor Use Management Strategy for Meager and Keyhole Hot Springs.

Meager Hot Springs remains closed, and work was done over the season to clean up the area and monitor use.

Keyhole Hot Springs will have seasonal openings. Work was done to improve the signage at the trailhead, including signage about Lílwat Nation and Lílwat Territory

By Harriet VanWart, Director



*Photo of Signage at Keyhole Hotsprings Trailhead*

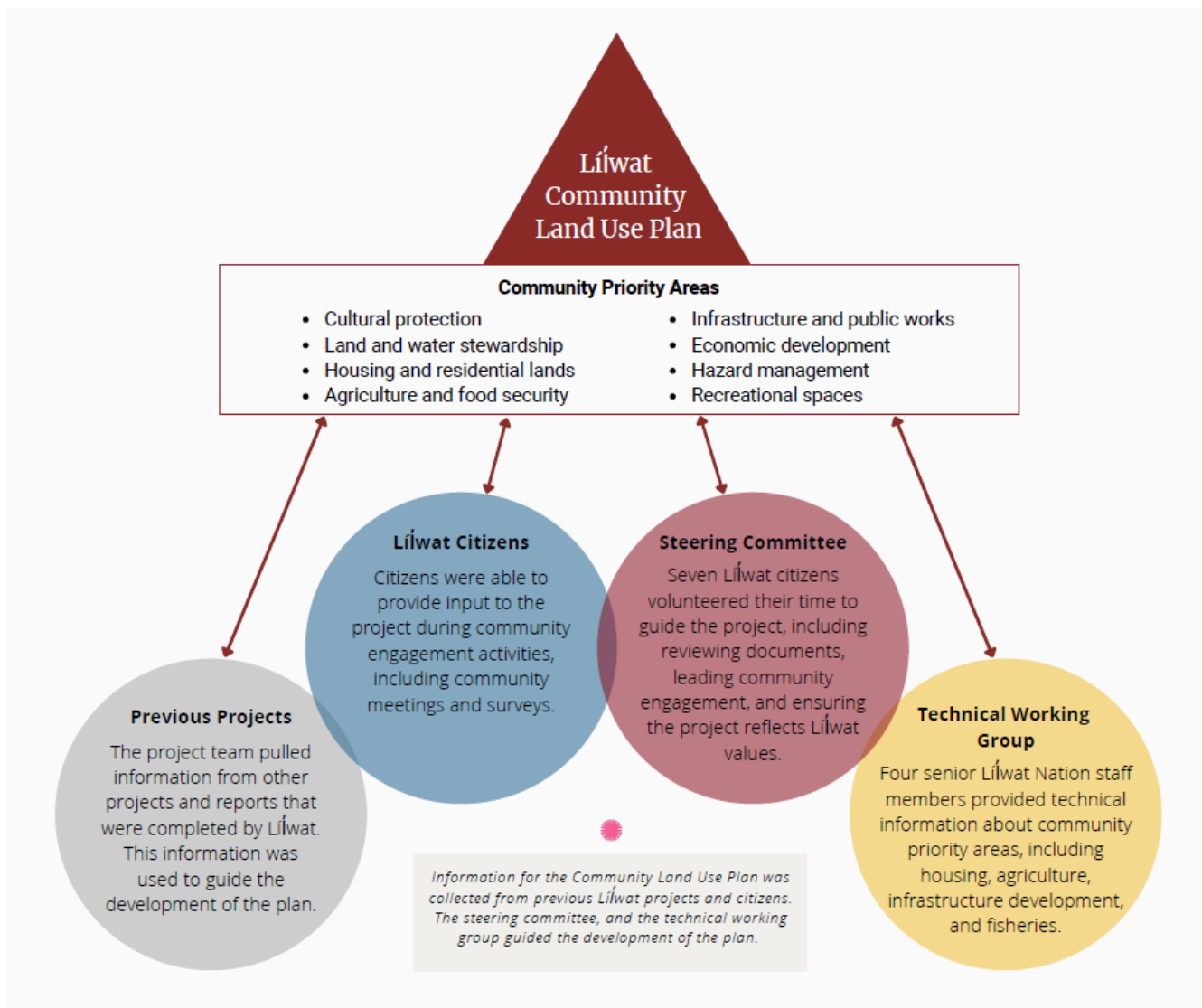
# PROJECT UPDATE *From Julia Poetscke*

## Community Land Use Plan

Work on the Community Land Use Plan (CLUP) Renewal began in August 2020 and is now near completion!

The project was led by the Lands and Resources Department, with support from a Technical Working Group of senior staff and guidance from a Lílwat Steering Committee. The Firelight Group, an Indigenous owned consulting firm, also provided technical support.

The diagram below describes how information for the CLUP was collected and incorporated into the updated plan:



## COMMUNITY ENGAGEMENT SUMMARY

Community engagement was carried out at key points throughout the project to ensure the plan was informed by the Lílwat community, both on and off reserve.

Through several engagement activities, including videos, newsletters, a survey, focus group meetings, online posts and community meetings, information was collected about the opportunities, issues, challenges and solutions for community land use.

Community meetings focused on the future of Lílwat community lands. We heard that Lílwat would like to see:

- \* A healthy ecosystem that can support the people
- \* An independent community with our own services
- \* Things for youth to do, safe spaces for children to play
- \* More areas for Lílwat to access and enjoy
- \* Protection of our resources
- \* More Lílwat business in the community
- \* More Ucwalmícwts signage
- \* Keeping the community safe from road traffic

Thank you to everyone who participated in our engagement activities throughout the project. Your ideas, knowledge and feedback are extremely valuable and your participation is essential to ensure the CLUP reflects the needs and desires of the community. Kukwstum'ickálap!

## WHAT'S NEXT?

We are now developing the updated CLUP document. Over the next few weeks, the document will be reviewed by the Steering Committee and the Technical Working Group. The document will then be brought to Chiefs and Council for their review and adoption of the plan. The plan will be available on the Lílwat website or a printed copy can be requested from the Lands and Resources Department.

## CLUP Steering Committee:

**Helena Edmonds**

Council Representative

**Dawn Wells**

Land Management Board  
Representative

**Marcella Jim**

Housing Board  
Representative

**Maxine Bruce**

Corporations Board  
Representative

**Alison Pascal**

**Tara Ritchie**

**Richenda Grafton**

---

## CLUP Technical Working Group:

**Harriet VanWart**

Director of Lands and  
Resources

**Maxine Bruce**

Environmental and  
Fisheries Manager

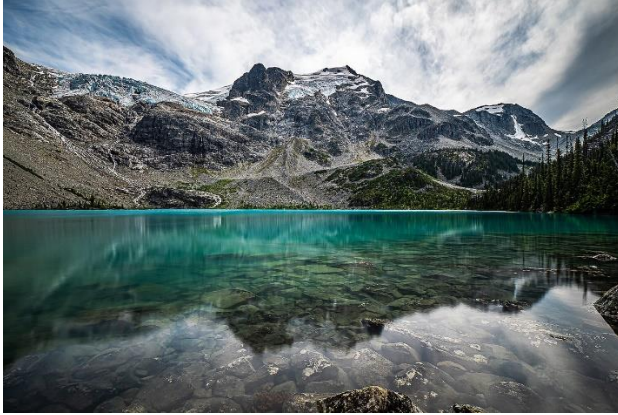
**Tom Laviolette**

Director of Infrastructure,  
Housing and Public Works

**Kerry Mehaffey**

Chief Administrative Officer





## Joffre Lakes Park Visitor Use Management Strategy

By Harriet VanWart, Director

Last June Joffre Lakes Park re-opened after its closure since March 2020. With the re-opening a day use pass system was implemented. The day use passes ensured there were always spaces to park in the parking lot which meant we did not have the dangerous occurrence of people parking on the highway (which occurred in the past).

We ran the second successful year of our Lílwat and N'quatqua Skel7awlh (Steward) program. The Ske7awlh were at the Park two days each week over the summer season. We also installed a Cultural Journey Kiosk in the parking lot so visitors could learn about Lílwat and N'Quatqua territories, cultures and histories. Lílwat and N'quatqua and any Indigenous person do not need passes for the Joffre and we encourage those who can to get out there and explore this beautiful territory.



## Johnny Jones

### Retirement....



On August 12 we surprised Johnny Jones with a ceremony to honour his retirement from his position with the Lands and Resources Department. (He thought he could slip away quietly!)

The gathering took place at a historic Lílwat village site located near the Green River, where Johnny and his crew have been conducting an archaeology dig all week to retrieve materials for radio-carbon dating.

Johnny's work for Lands and Resources over the past 20 years was more than just a job, it was just one part of his life's work to protecting cultural and archaeology sites throughout Lílwat Nation territory.

Thank you to all those who were able to attend and share in honouring Johnny. Thank you also to Lílwat Forestry Ventures for coordinating our safe transportation to the site, to the hand drummers for the beautiful songs, to Kúkwpi7 Skalúla7 for your leadership, Kúkwpi7 Gélpca7 for the carving, and Councillor Maxine Bruce for bringing the ceremony together so beautifully. The Lands and Resources Department will miss Johnny greatly but is committed to upholding Johnny's passion and commitment to protecting these sacred places throughout Lílwat Territory.

# Lílwat Land Use Referrals

Carrie Lester, Referral Manager and  
Lex Joseph, Cultural Technician

We continue to meet with the Referral Committee each month on zoom and provide our responses to governments and companies about proposed land uses within Lílwat Territory. All our responses assert Lílwat title over Lílwat Territory.

Some recent referrals have led to an archaeology assessment at Joffre Lakes Park to record a known pictograph and approving a Pemberton Official Community Plan amendment necessary for the Nkwukwma Benchlands Neighbourhood development.

We have also been busy with forestry referrals and ensuring that archaeology studies are conducted before ground disturbance occurs. This has led to cut blocks being adapted or dropped altogether to ensure that heritage and archaeology sites are protected and properly buffered.

Some referrals require more long term and on-going engagement. We are currently in discussions with the Meager Creek Development Corporation to review their plans for a geothermal development at Meager Mountain. We have done some initial archaeology work and will be conducting an environmental review, a Traditional Use Study, and a socio-economic study over the course of the year to fully understand this project and its potential impacts.

# LANDS ON RESERVE

## *Important Information*

If you are a Lílwat Member and have land you would like to register to you or a family member, please click on the link below and follow the Lílwat process provided

[Lílwat Land Registration Process.pdf](#)

If you have any questions or concerns please contact the Lands and Resources Department by phone 604.894.6115 or email [Lands@lilwat.ca](mailto:Lands@lilwat.ca) and we will be happy to assist you with this process

**Kúkwstumckacw**

## The Land Management Board is seeking new members as Alternates

What is the Land Management Board?

The Land Management Board is a standing Board of Lílwat Nation Chiefs and Council. The Board is responsible for:

- Reviewing, processing and implementing land registration applications and transactions in accordance with Lílwat Land Law;
- Seeking to represent the best interests of Lílwat regarding on reserve land use decisions;
- Assisting with mediation of land disputes and striving to minimize land use conflicts;
- Sharing information with the community about on reserve land use issues; and
- Recommending to Chiefs and Council new policies and procedures for on reserve land transactions.

For more information on **Who Can Apply** and **How To Apply**

Please Contact [maria.andrew@lilwat.ca](mailto:maria.andrew@lilwat.ca)



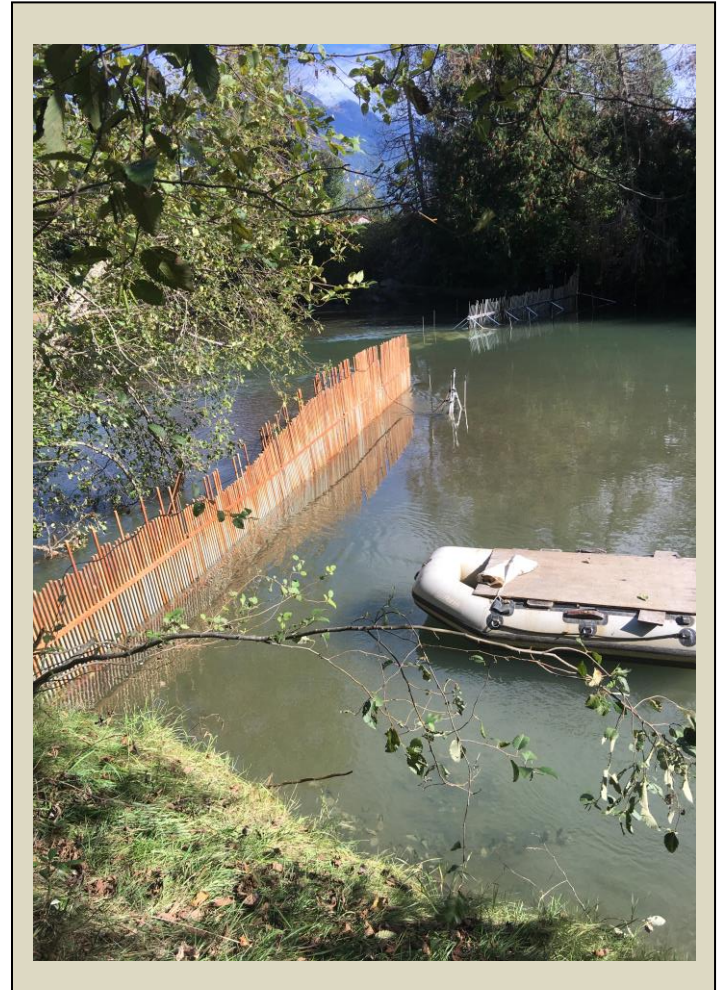
# Lílwat Skel7awlh Update

**Salmon Surveys**-On August 20<sup>th</sup> we installed the sockeye counting fence and underwater camera into the Birkenhead River. This year was a challenging year for the sockeye salmon count. The month of September brought heavy rains causing river levels to rise substantially resulting in interruptions to site operations. However, I am pleased to share with you that as of September 29<sup>th</sup>, an estimated 34,000+ Sockeye have past through the Counting Fence.

Sockeye in the Green River appear to be in peak spawning; however, water visibility continues to be poor. Sockeye in Sampson Creek are past peak spawning. Sockeye numbers in the Green River are over 800 and as of September 23<sup>rd</sup>, there were 257 in Sampson Creek. The temperature of the Green River is at 9c, and the Birkenhead River is at 11c. Interesting.

In addition, the Lílwat Skel7awlh Technicians are spending time in the Lower Lillooet River system conducting riverbank walks estimating the number of salmon in the creeks and streams that enter the main stem. I am so thankful to the Technicians for all their time and efforts, they tough out the forest service roads everyday.

On September 20<sup>th</sup>, we started the Coho Salmon count in the Lillooet River main stem, we should be completed this by end of January 2022. We count the coho salmon with an underwater camera, very similar to the Sockeye count. The Lílwat Skel7awlh Technicians will be facing some tough weather conditions, the fall rains and then the cold winter months.



## **Environmental Monitoring** -The Lílwat Skel7awlh

Technicians' environmental monitoring tasks have them conducting surveys in the Upper Lillooet area on the amount of berries and mushrooms. We have the Lílwat Skel7awlh Technicians doing angling surveys and juvenile salmon surveys in the Lillooet River tributaries. We also are involved in the Grizzly Bear Hair Snag survey.

Regarding Joffre Lakes Park and Tenquille Lake Park, we will be finalizing these projects by the end of September. I have much admiration and appreciation for the Lílwat Skel7awlh Technicians for their persistence to complete these projects.

**Archaeology**- In closing, as you can see this season is keeping us very busy, we're doing fisheries work, environment monitoring work and I'm proud to share that the Lílwat Technicians are out in the territory conducting the archaeology surveys. I often say, "you are walking in the footsteps of our ancestors". Imagine that eh?! Congratulations to the Lílwat Skel7awlh Technicians for all the good work you do!

*-So anyways, Kukwstumckalap, Nilh ti*