



**Lands and
Resources**
Ucwalmícw Tmícw

COMMUNITY NOTICE: **WILD PARSNIP FOUND ON OLD RESERVE**

Several large patches of wild parsnip have been located on the Old Reserve. Lilwat Skéł7awlh and the Sea to Sky Invasive Species Council (SSISC) are working to remove and prevent the spread of these harmful plants.

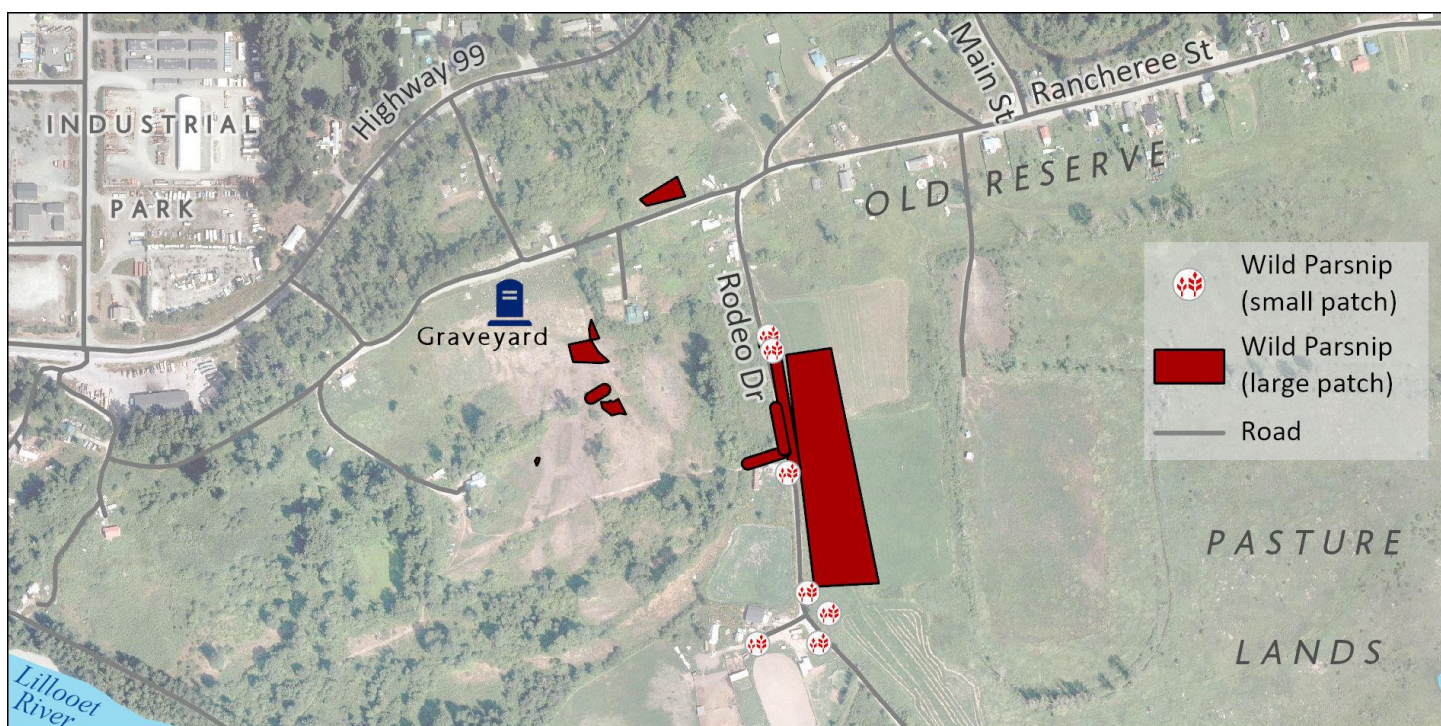
WHAT IS WILD PARSNIP?

Wild parsnip is an invasive plant, native to Europe and Asia. It can form dense stands and spreads quickly in disturbed areas such as open fields, abandoned yards, meadows, and roadsides. The plant contains a highly toxic sap that can cause severe burns and blindness if it comes into contact with the skin or eyes.

Seeds are easily dispersed by wind, water, and on mowing or other equipment. Wild parsnip is highly competitive and will continue to spread and outcompete native vegetation if not removed.

WHERE HAS WILD PARSNIP BEEN FOUND?

Wild parsnip has been found along Lillooet Lake Road and on adjacent properties, as well as on the Old Reserve. Sites along Lillooet Lake Road have been treated and monitored by the SSISC for several years. This summer, we are focusing on locating all wild parsnip patches on the old reserve (see map below) and beginning treatment and removal efforts. Treatment must occur consistently for several years to be effective.



HOW TO IDENTIFY WILD PARSNIP



Yellow flowers form flat umbrella shaped clusters.



The stem is light green and deeply grooved.



Leaves have distinct saw-toothed edges.

If you suspect you have Wild Parsnip growing on your property, do not try to remove it yourself without proper training and protective gear. Please contact the Lands and Resources Department at 604-894-6115 or report to the SSISC at ssisc.ca/report.