



Emergency Support

Women's Crisis Support

Howe Sound Women's Centre
Crisis line: 1-877-890-5711
Website: www.hswc.ca

Pearl's Safe Home in Pemberton provides Temporary Emergency Shelter for women, with or without children, escaping abuse or at risk of homelessness.

Crisis Intervention and Suicide Prevention Centre

Call toll-free: 1-800-SUICIDE (1-800-784-2433)
Chat: www.crisiscentrechat.ca
Text: CONNECT to 68686

The KUU-US Crisis Line Society

24-hour Crisis Line for Adults, Elders & Youth
Toll-free line: 1-800-588-8717
Adults/Elders: 1-250-723-4050
Child/Youth: 1-250-723-2040

Victim Link BC

Victim Link BC is a toll-free, confidential service available 24/7 and can be accessed by calling or texting 1-800-563-0808 or sending an email to VictimLinkBC@bc211.ca.

It provides information and referral services to all victims of crime and immediate crisis support to victims of family and sexual violence, including victims of human trafficking exploited for labor or sexual services.



Program Criteria

—

Stqaka7stúmc is a unique resource to Lílwat Nation and the surrounding communities. **Our main goal is to ensure the safety of all residents and staff.**

The program's criteria for those who choose to seek services from Stqaka7stúmc are: Single women, or women with children fleeing from abuse/domestic violence.

(Domestic Violence involves physical or sexual assault, or threat of such violence, against an intimate partner. An intimate partner, with respect to a person, includes their current or former spouse, common-law partner and dating partner.)

To guide eligibility the following definitions apply:

AT RISK OF VIOLENCE

—

Refers to a situation where a woman indicates that she and/or her children are at risk of experiencing violence.

VIOLENCE AGAINST WOMEN

—

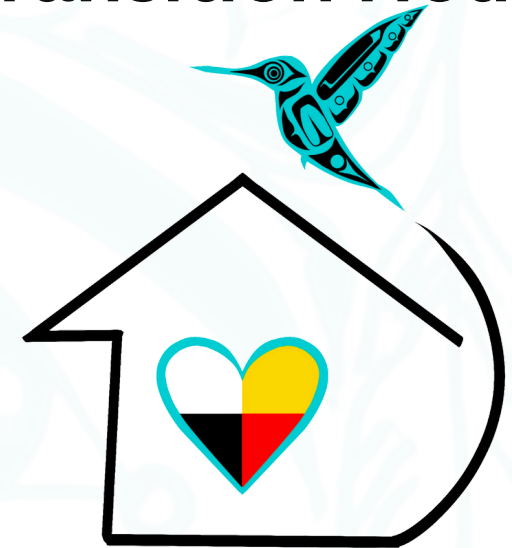
Refers to gender-based violence that reflects and reinforces women's subordinate status in society. This includes physical, emotional, economic, financial, sexual, and spiritual abuse or violence on women because of their gender. This umbrella term includes domestic, family, or intimate partner violence.



Stqaka7stúmc

Hold my Hand

Lílwat Nation Transition House



Phone: 1(604)-384-7247
Toll free: 1(833)-512-0664
transitionhousesupport@lilwat.ca

Hours of Operation:
Stqaka7stúmc is open 24/7





Lilwat Transition House

Hours of Operation:

Stqaka7stúmc is open 24/7

We are committed to walking with women and their children while they make the difficult transition from a abusive violent environment to a positive independent lifestyle. We are here to hold your hand while you walk this new path.



House Capacity

The Transition House has 7 units. 3 of which are single occupancy with access to shared/communal kitchen and bathrooms. Four family units upstairs are fully self-contained, with the exception of a shared laundry. The capacity for the Transition House is 18-23.

Length of Stay

The length of stay at a transition house is typically 30 days, however, we recognize the unique needs of the communities, therefore, the length of stay at this transition house will vary depending on the residents' needs.

Resident Expectations

While residents are here, they will receive basic life skills, advocacy, and support. The transition house will only be providing food for those that do not have financial/income in place when they arrive. We will encourage residents to be as independent as possible during their stay. All house rules must be followed, and a limit to personal socializing, which is to encourage the residents to work on the issues that brought them to the transition house.

Programming

Program Mission

The mission of the Transition House is to reduce barriers to create accessible and safe services for all women and children in need of support.

Program Goal

The goal of the Transition House is to support women and their children while they make the difficult transition from an abusive or violent domestic environment to a positive, independent, nonviolent lifestyle. Support services and safe shelter will be provided.

Program values

We value those that are dealing with hardship and currently living in a difficult situation. We believe every woman and child should have a choice in decisions about their care, and that they have the right to a safe, respectful environment.